



# Single Mode Laser Beamshapers



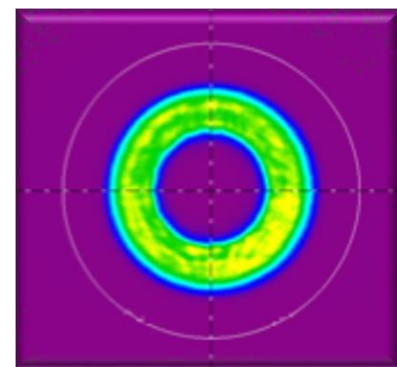
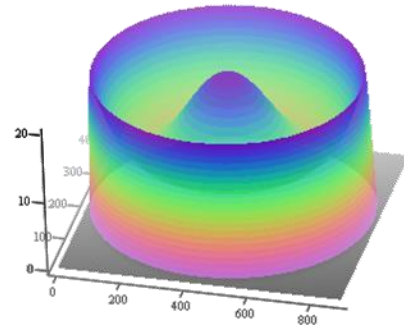
PowerPhotonic  
Enhancing Beam Performance

## Overview

PowerPhotonic's single mode field mappers use a unique freeform direct-write process to fabricate customized single mode beamshaping surfaces in to a fused silica substrate.

These single mode beamshapers are carefully designed to transform a single mode beam into a variety of image shapes at the focus of a lens, providing the highest performance in shape and efficiency without adding additional speckle or diffraction artifacts.

PowerPhotonic's fabrication technology can generate field mappers to produce a wide selection of shapes and intensity distributions including square, round, annular and more. These field mappers are offered in a 1 optic or 2 optic solution, allowing for optimal tradeoffs between cost and performance.



## Key Features

- ⦿ All fused silica optics
- ⦿ Customizable image shapes
- ⦿ Customizable image sizes
- ⦿ No additional speckle or diffraction artifacts
- ⦿ Long depth of focus version available
- ⦿ Suitable for single-mode TEM00 lasers ( $M^2 < 2$ )
- ⦿ Suitable for use with galvo-f $\theta$  system

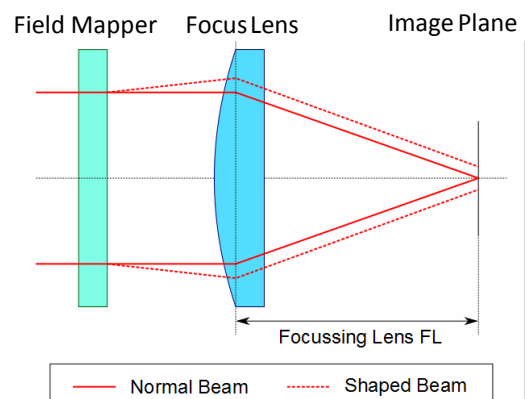
## Target Applications

- ⦿ Materials processing: low power and pulsed
  - Laser polishing
  - Laser marking and drilling
  - Laser lift-off
  - Glass annealing and crystallisation
- ⦿ Solar cell and Li-ion battery manufacturing

## Benefits

- ⦿ Highest system efficiency possible >98%
- ⦿ Dramatic increase in beam uniformity
- ⦿ High power handling, >20kW CW
- ⦿ High laser damage threshold, >100J/cm<sup>2</sup>
- ⦿ No focal plane shift
- ⦿ Good through-focus performance
- ⦿ Long depth of focus
- ⦿ Nearly diffraction limited spot size

## How they are Used



## Standard Product Selection – Single Mode Field Mappers

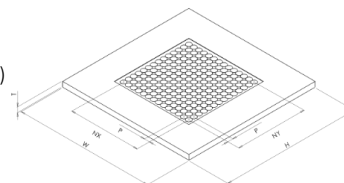
Part Number	Spot Shape*	1/e2 Input Beam Diameter (mm)	Spot Radius (mm)	Height H (mm)	Thickness T (mm)	Long DOF version**
PP-FM-T1-SQ-D5-R05	Square	5.00	0.50	25.4	1.00	No
PP-FM-T1-SQ-D5-R1	Square	5.00	1.00	25.4	1.00	No
PP-FM-T3-SQ-D5-R01	Square	5.00	0.10	25.4	1.00	Yes
PP-FM-T3-SQ-D5-R05	Square	5.00	0.50	25.40	1.00	Yes
PP-FM-TX-XX-DX-RXX	Custom	Custom	Custom	Custom	Custom	Custom

\*Image shape can be specified as Circular = CI, Square = SQ, Annular – AN  
For custom image shapes please contact PowerPhotonic

\*\*T3 indicates 2 optic system within extended depth of focus and smaller available spot radii

Optical coating on request at extra cost  
All custom parameters can be customer specified




W: Width (+/-0.10mm)  
H: Height (+/- 0.10mm)  
T: Thickness (+/- 0.02mm)



## Customization Program

Due to the unique nature of the PowerPhotonic manufacturing process, our standard products can be easily modified to meet specific requirements. Please contact PowerPhotonic for additional information.

## Options

-  Clear Aperture Width and Height
-  Substrate Width, Height and Thickness
-  Divergence Angle

## About Us

PowerPhotonic is a global leader in precision micro-optics products. Our business was founded with the objective of providing unsurpassed excellence in all aspects of design and manufacture of micro-optics for optical and laser applications. Our world-class design skills are supported by an innovative and flexible manufacturing process that allows the company to design both a broad range of state-of-the art standard micro-optics products and uniquely, to offer a low cost and rapid fabrication service for creating completely freeform optical surfaces

## お問い合わせ先

株式会社プロリンクス 営業第2課

Tel: 03-5256-2053 / Fax: 03-5256-2272

Email: [contact@prolinx.co.jp](mailto:contact@prolinx.co.jp)

URL: <http://www.prolinx.co.jp/products/power-photonic-lens.php>

